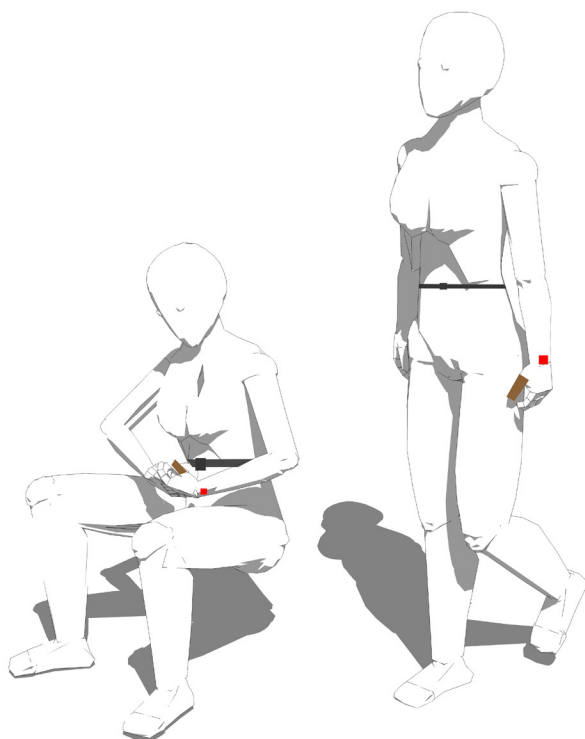


BI-SENSE XP



OWNER'S MANUAL

***“Invisible threads are
the strongest ties.”***

Friedrich Nietzsche

Table of Contents

1.General Information..... pg 07-09

1.0. General informations.....pg.07

1.1. System Overview.....pg.08

1.2. Project References.....pg.08

1.3. Authorized Use Permission.....pg.08

1.4. Points of Contact.....pg.08

 1.4.1. Information.....pg.09

 1.4.2. Coordination.....pg.09

 1.4.3. Help Desk.....pg.09

2.System Summary

2.0 System Summary.....pg.11

2.1 System Configuration.....pg.12

2.2 Data Flows- User Access Levels.....pg.12

2.3 Contingencies and Alternate Modes of Operation.....pg.14

3.Getting Started

3.0 Getting Started.....pg.17

3.1 Logging On.....pg.17

3.2 System Menu.....pg.17

3.3 Changing User ID and Password.....pg.17

3.4 Exit System.....pg.17

4.Using the system (Online)

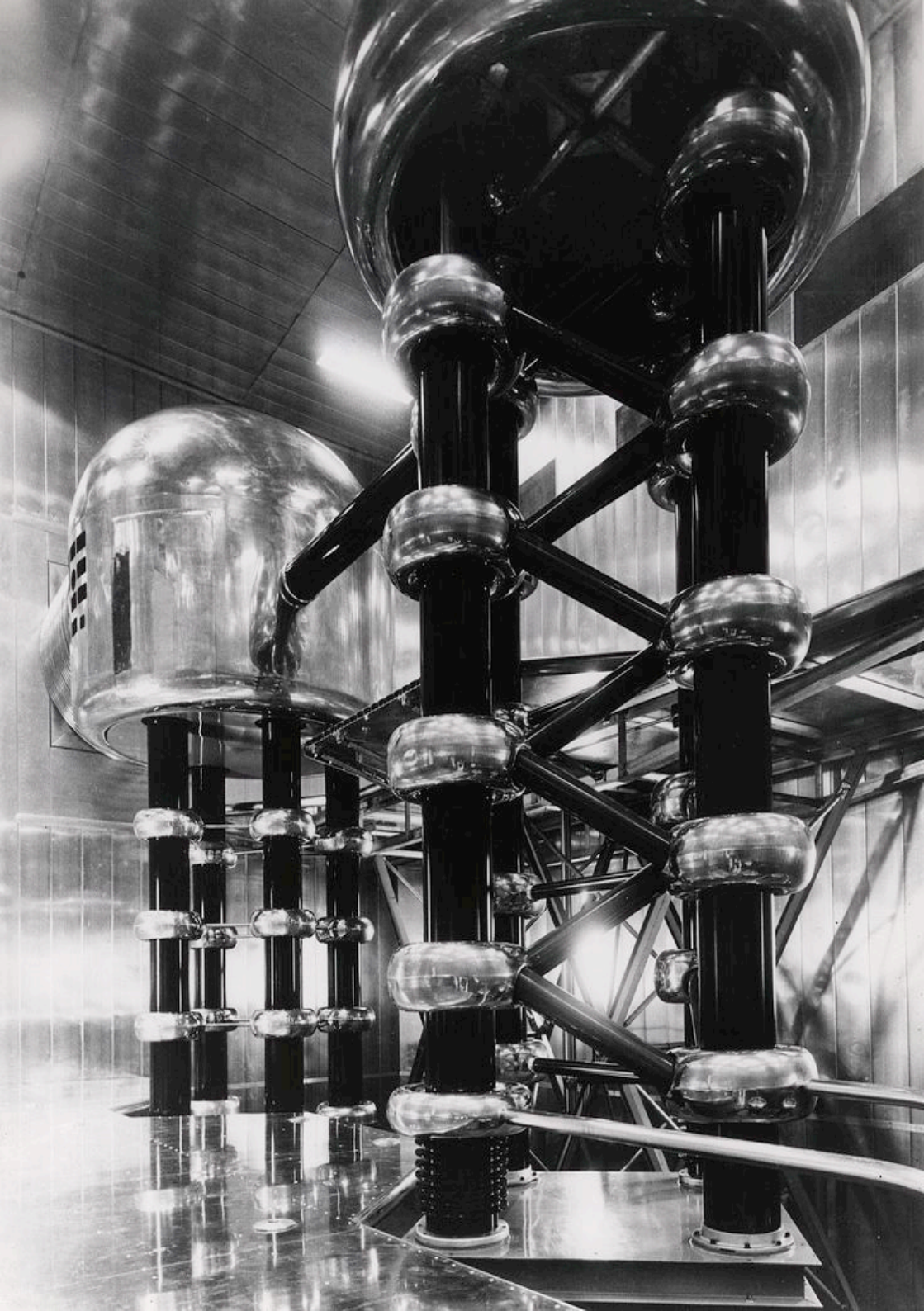
4.0 Using the system.....pg.19

4.1 Special Instructions for Caveats and Exceptions.....pg.19

5.Quering.....pg.21

6.Report.....pg.21

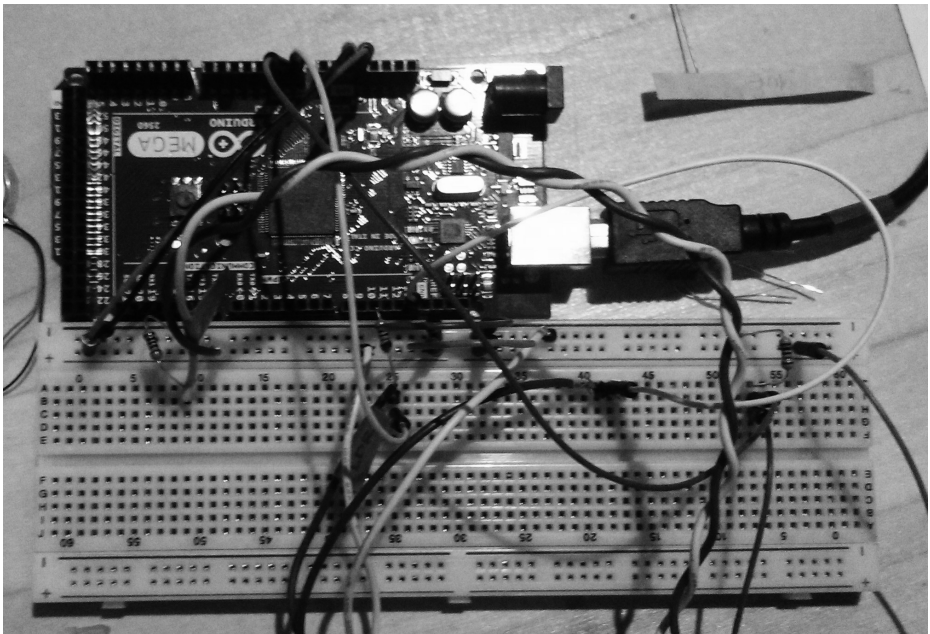
7.Terms and Conditions.....pg.21



1. General Information

1.0. General Information

The device has been developed responding to the need for affection, security feeling and comfort of the contemporary human being. Nowadays, after all these years of globalization and the expansion of the cities and interconnections, the alienated human relationships have the chance to be redefined. The previous models of communication like social networks, image status and the hashtag culture have failed to respond to their basic purpose to convince for someone's happiness. Now it's time for the image and the sign to be replaced by the interactivity between two users and the lived experience beyond someone's expectations to pretend.



1.1. System Overview

A central server offers someone the chance for a “twin”, a “significant other” partner, a virtual connection between two strangers. A central server scans your DNA data and matches you with a compatible human being. The device responds to the need for the body itself to express without our personal distortion of our image. It is a two directional channel, works like a brain connector with the users giving feedback to one another depending on their emotions with the purpose of transmitting comfort and devotion to each other, without personal obligation.

1.2. Project References

The developers of the software worked on the concept of building a “twin” prototype, taking benefit from the unique qualities that encloses this kind of relationship. These include the sharing of the emotions without the intervention of speech, as far as some of them cannot be described but only experienced.

1.3. Authorized Use Permission

The device is applied to the user after the birth by the server. At the time is applied to his “twin”. When the user becomes an adult he has the right to choose the parameters of the use. He will be asked annually to review the User’s Agreement License according to his will.

1.4. Points of Contact

You can log-in with your account information to:

tect.gr/bisense/

1.4.1. Information

tect.gr/bisense/

1.4.2. Coordination

- Central server
- Regional servers (Select)
- Personal Assistant Developers (Name)

1.4.3. Help Desk

Address to the support department

Tel: +30 0101110

Email: support@bisense.com

Twitter: @bi-sense XP

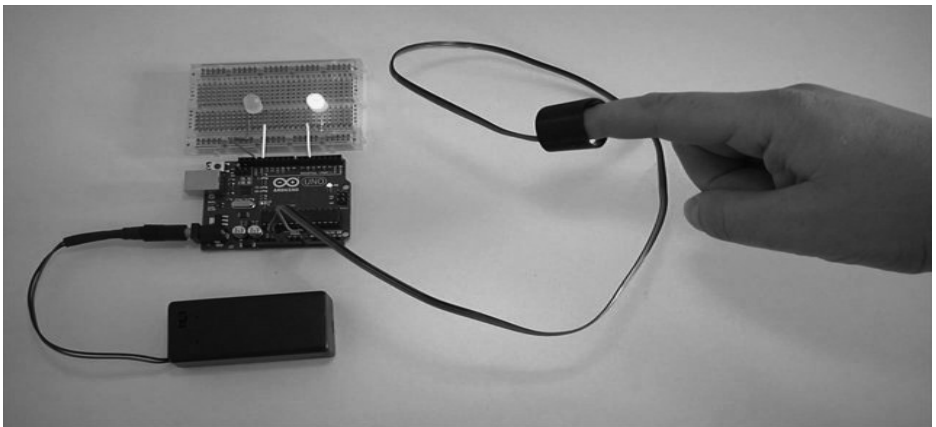
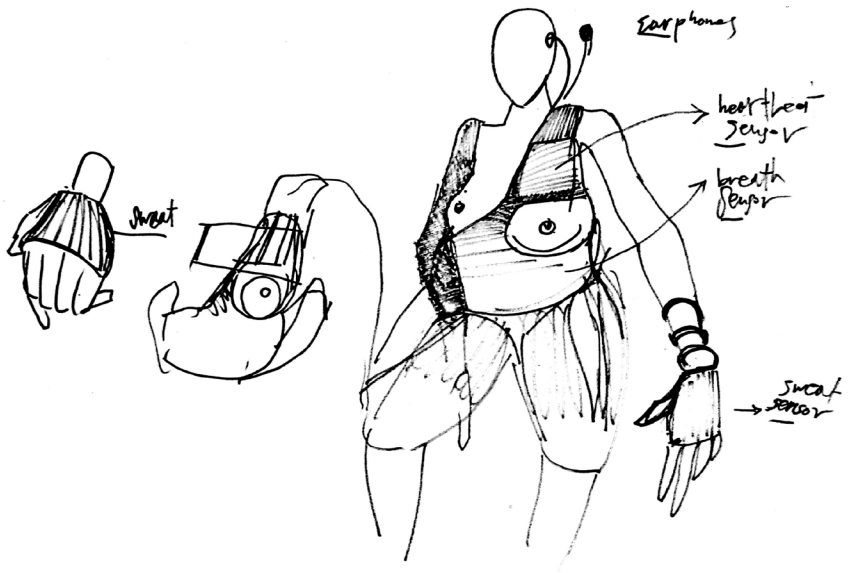
CONTACT US





2. System Summary

Facebook: Bi-Sense XP



2.0. System Summary

2.1. System Configuration

- Central server and network system:
The existence of a network instead of a one-to-one connection gives you the plurality to find the most compatible partner.
- Feedback system
- Bi-Directional channel
- Bi-Sensor detector
- Detection of human feelings
- No limitation on the number and range of feelings: fear, anxiety, frustration, emotional, happiness, bliss, excitement, love, affection, passion etc.

2.2. Data Flows- User Access Levels

It is about a two-way process device. It is important that both users can play the role of transmitter and receiver.

Input:

It uses sensors that can detect your emotional situation by examining:

- pulse levels
- heartbeat
- Breath frequency
- Temperature variations

Output:

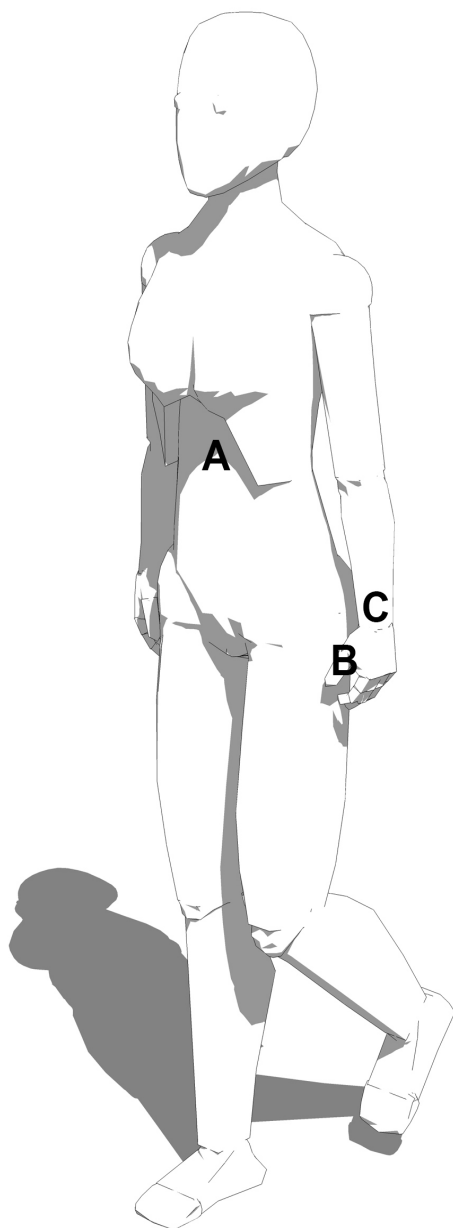
- Vibration
- Speakers

(Symbolic use of triggers. Due to the fact that some emotions are hard to distinguish from one another, for example the heartbeat

**A: Breathing Frequency /
Conductive Fabric**

B:Heartbeat Sensor / Led

C: Trigering / Vibration

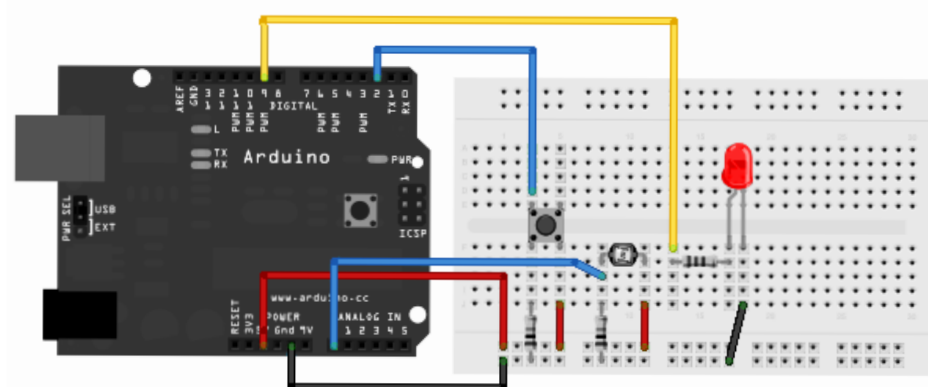
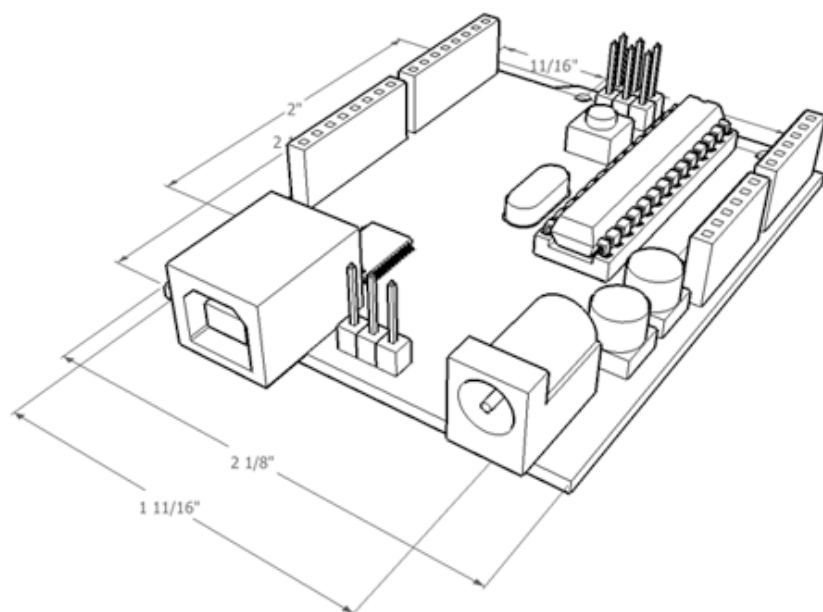


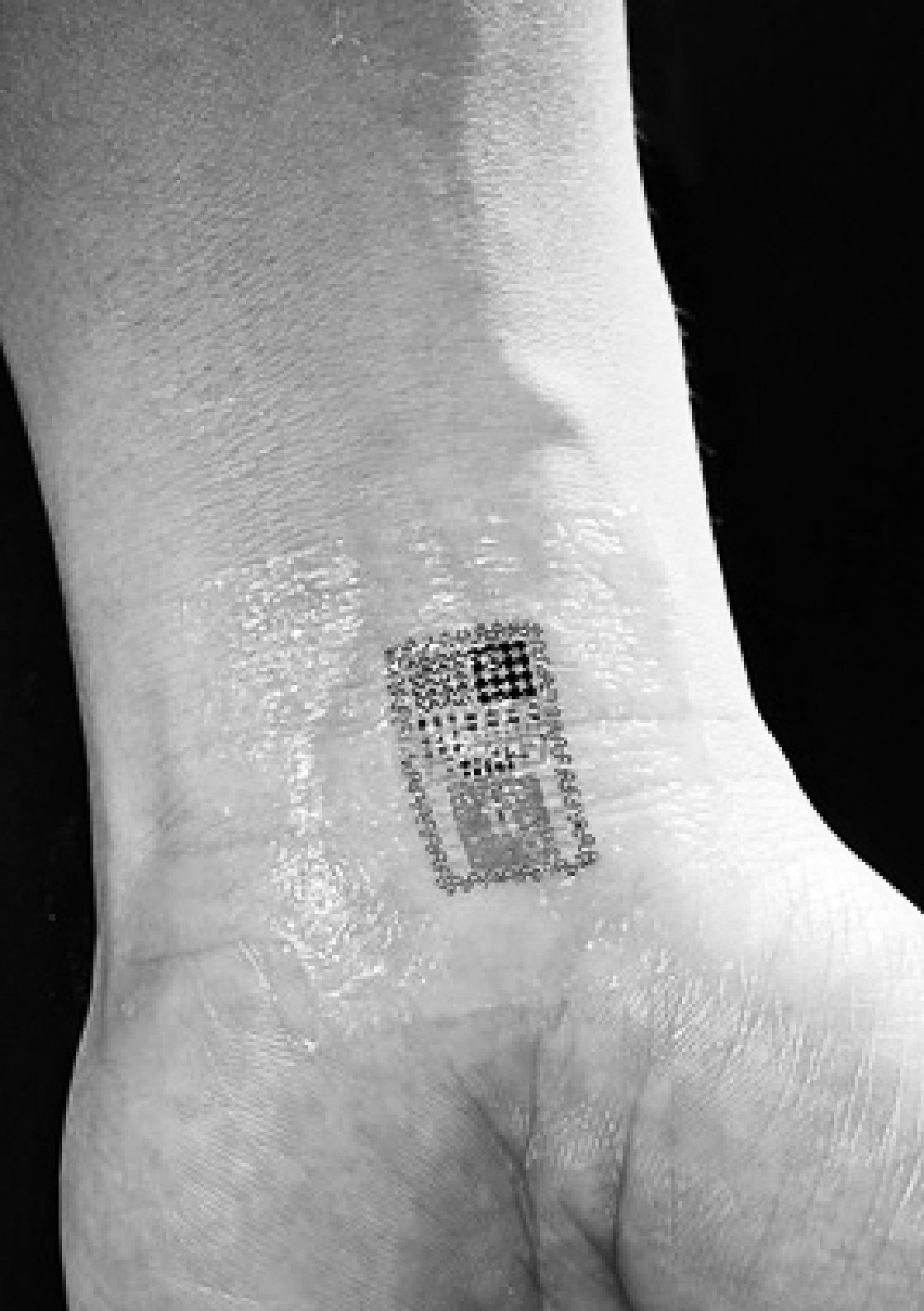
during extreme happiness differs slightly from normal, the device stimulates human gestures that express the emotions symbolically, the noise of clapping your hands when you are happy)

2.3. Contingencies and Alternate Modes of Operation

- Discreet Mode (need for privacy, relaxation)
- Emergency Mode (anxiety, panic, stress, need for support)

A large red rectangle with the word "HELP" in white, bold, sans-serif capital letters.A large black rectangle with the word "EMERGENCY" in white, bold, sans-serif capital letters.





3. Getting Started

- Sex Mode

3.0. Getting Started

The device as second Skin is imported after birth. It gradually readjusts to the body.

3.1. Logging On

You are registered automatically to the system through the server which provides you the user ID Number and informs you about the Number of your “Twin” Device.

3.2. System Menu

[System Function Name]

User Name: Number / Not changeable

Password: Fingerprint

3.3. Changing User ID and Password

Not possible.

3.4. Exit System

Not possible.





4. Using the System (Online)

4.0. Using the System (Online)

System Name/Password to connect with the central server.

4.1. Special Instructions for Caveats and Exceptions

- **Birth:** After your birth you are matched automatically with a same aged person who acts as your twin partner with the use of Bi-Sensor XP.
- **Death:** In case of dying you are automatically deleted from the system. In case your Twin partner dies the system is automatically informed. Your System ID is implied to reboot and you are offered a new System Name and Twin Partner.
- **Physical affection/affair:** You have to comply the terms of use and keep secret and personal your system ID information. The only contact that you can have with your twin is through the device and the sensors. In terms of a physical affection that is proved you are faced with the consequences as described in the terms of agreement. Your current user ID is deleted and you are given a new one with another Twin Partner.

A 3D rendered white figure, resembling a stylized person, is holding a large white rectangular sign. The sign is tilted slightly to the right. On the sign, the words "Terms & Conditions" are written in a bold, dark blue, sans-serif font. The figure is positioned behind the sign, with its arms visible holding the edges. The background is a plain, light gray.

**Terms &
Conditions**

5. Quering

We now count millions of users and the number is increasing.

6. Reporting

You case of violation you should report to the system to change your Twin Sensor. Our team works on the preservation of your personal data.

7. Terms and Conditions

Last updated: June 2025. Please read these Terms and Conditions ("Terms", "Terms and Conditions") carefully before using the <http://www.bi-sense-xp.org> website (the "Service") operated by Bi-Sense XP, Inc.

Your access to and use of the Service is conditioned on your acceptance of and compliance with these Terms. These Terms apply to all visitors, users and others who access or use the Service. By accessing or using the Service you agree to be bound by these Terms. If you disagree with any part of the terms then you may not access the Service.

Termination: We may terminate or suspend access to our Service immediately, without prior notice or liability, for any reason whatsoever, including without limitation if you breach the Terms. All provisions of the Terms which by their nature should survive termination shall survive termination, including, without limitation, ownership provisions, warranty disclaimers, indemnity and limitations of liability.